

Ethics and the Official Reports about the

Destruction of the World Trade Center Twin Towers (WTC1 and WTC2) on 9/11: A Case Study

John D. Wyndham, PhD (Physics), Scientists for 9/11 Truth Wayne H. Coste, PE, IEEE (SM) and Michael R. Smith, IEEE (M), Architects & Engineers for 9/11 Truth
2014 IEEE International Symposium on Ethics in Engineering, Science, and Technology (May 23 - 24, 2014, Chicago, IL, USA)

Abstract

The final official reports on the destruction of the World Trade Center Twin Towers (WTC1/2) were published in September, 2005 by the National Institute of Standards and Technology (NIST). Since then, serious questions have been raised by over 2100 qualified architects, engineers and scientists about how NIST selected the forensic evidence to be included and the processes used to reach its conclusions. The public has come to expect that analyses would depend on peer review to verify the soundness of a scientific work and ensure that the conclusions are the result of a consistent, transparent and ethical process. This is especially important in reporting on an event with such major consequences as that of September 11, 2001.

Ethical Standards for Failure Assessments

All professional organizations have codes of ethics. All of these organizations insist that their members adhere to a code of conduct that ensures their professional work products adhere to ethical standards that uphold the credibility of their professional organization. The use of selective or fraudulent data to support a hypothesis or claim is an ethical violation.

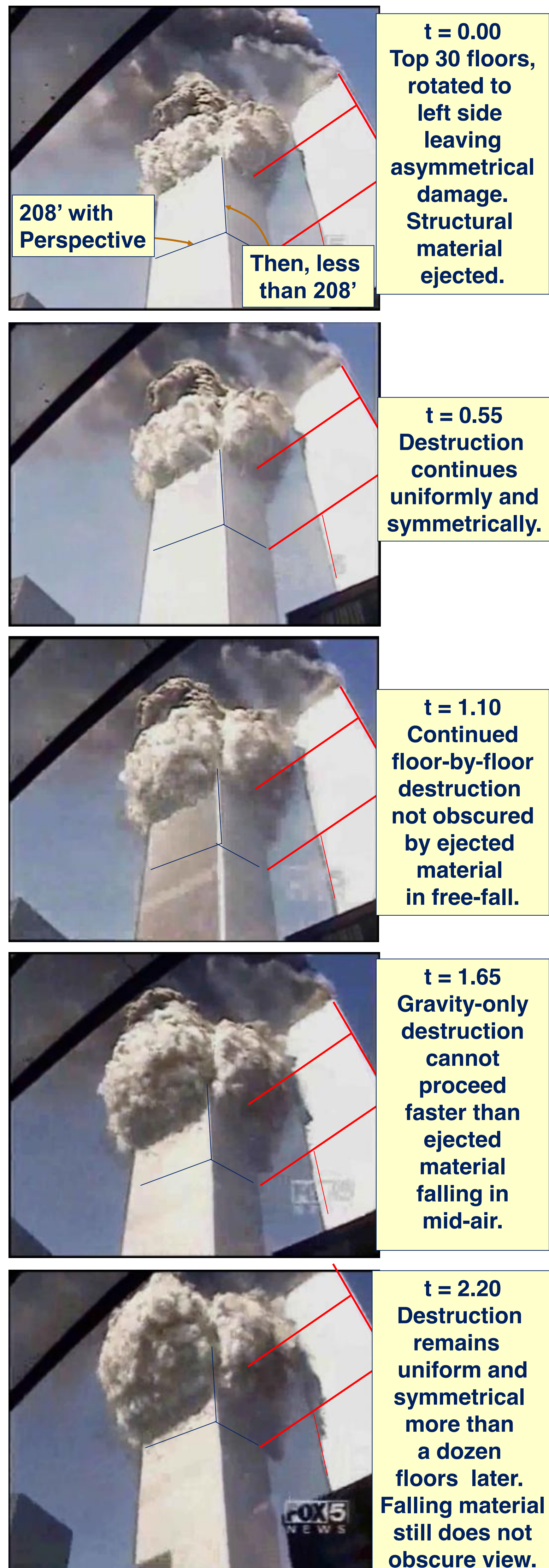
The US Department of Health and Human Services, Office of Research Integrity, defines "Research Misconduct" as including fabrication or falsification. Its definition of fabrication includes making up data or results, while the definition of falsification includes omitting data. NIST's final reports are suspect from an ethical standpoint because of the use of selective and even fraudulent data to support their hypothesis of a gravity only structural weakening and subsequent failure. The magnitude and enduring nature of NIST's misrepresentations has alarming consequences for society.

Consequences of Avoiding Peer Review

NIST permitted only limited public comments and its final report did not include an independent peer review process. Requests for supporting materials and key analysis have been refused by NIST. This paper describes many aspects of the investigations into the destruction of the Twin Towers that could not survive the scrutiny of an open and transparent peer review process.

Buildings can collapse naturally under gravity for several different reasons that include fire, earthquake, subsidence, and poor construction. The appearance of the building during and after collapse can point strongly to the reason for the collapse. Therefore the study of a building's actual collapse and its aftermath can provide the most direct evidence leading to the reason for collapse.

For example, NIST's analysis did not proceed past the point where initiation of collapse was asserted to be imminent and therefore did not cover the actual collapse. The mechanics of collapse should have been a central portion of the investigation. NIST examined only the period BEFORE the actual destructions began but nevertheless concluded that there was "no corroborating evidence ... for controlled demolition using explosives." This approach ignored the fact that most evidence of controlled demolition appears only after a demolition begins. This omission subverted the stated objective of these reports which was to determine "Determine why and how WTC1 and WTC2 collapsed following initial impacts of the aircraft ..."



Failure to Study the Destructions and their Aftermaths

NIST had in its possession copious photographic and video material showing the Towers' destructions. By failing to study the actual "collapses" and their aftermaths, NIST omitted the most pertinent data and subverted any inquiry into the use of explosives. These omissions violate professional ethical standards and the scientific method.

The five frames in Figure 1 show the destruction is clearly sequential, symmetrical and floor-by-floor during 2.2 seconds of the "collapse." Because this demolition wave can be seen, without being obscured by falling debris for a dozen stories, this indicates that the structure was being broken-up, pulverized and ejected almost as fast as building material can descend in free-fall outside the building. Figure 2, taken moments after the sequence in the previous figure, shows the symmetrical lateral ejections in all directions and the material in free-fall outside the building beginning to obscure the demolition wave.

Figures 3 and 4 show the destruction of the North Tower (WTC1). Again, the most salient observation is that the destruction is showing lateral ejection of materials in all directions. This behavior is not indicative of a mid-structure weakening followed by gradual deformation and an ensuing structural failure. Rather, it is consistent with explosive ejection and pulverization.



Figure 2: South Tower Destruction Showing Lateral Ejections in all Directions and the Debris Curtain Beginning to Obscure the Demolition Wave (taken shortly after t = 2.20).



Figure 3: North Tower Destruction - Side View



Figure 4: Aerial View of the North Tower

Aftermath

When the dust settled, the devastation was widespread. Figure 5 shows a 365 meter (1200 foot) diameter debris field around each tower that FEMA documented. Figure 6 shows large structural members impaled in nearby buildings.

The evidence for a gravity-only collapse is non-existent because the building mass remaining within the footprint of the building at the conclusion of the destruction, estimated at only about 10 percent, was insufficient to have destroyed and violently pushed aside the undamaged lower 90 floors.



Figure 5: 1200 foot Diameter Debris Field Centered Around Each Tower.



Figure 6: Structure From North Tower Ejected into World Financial Center Building 3.

Fourteen survivors, including members of the New York Fire Department, were in the fourth floor stairwell of WTC1 - the so called "Miracle of Ladder 6." Once the dust cleared, they reported looking up into the open sky instead of being buried under 110 stories of rubble.

Failure to Follow NFPA Guidelines

NIST never examined the WTC powder to look for evidence of explosives. Guidelines developed by the National Fire Protection Association (NFPA) in collaboration with NIST are strongly recommended for investigations of catastrophic building collapses.

Independent scientists subsequently found red-gray chips containing unreacted nano-thermite in the powder. Nano-thermite may be formulated to have explosive as well as incendiary properties. Its reaction product is mainly molten iron that may be dispersed by explosive force as tiny droplets that solidified as iron-rich micro-spheres. Tests of the red-gray chips showed that on a gram-per-gram basis, they had the energetic capability of TNT.

Given the amount of death and destruction, and the consequences that followed, NIST's failure to follow the principles contained in the NFPA standard for high-order damage is inexcusable and unethical in the extreme.

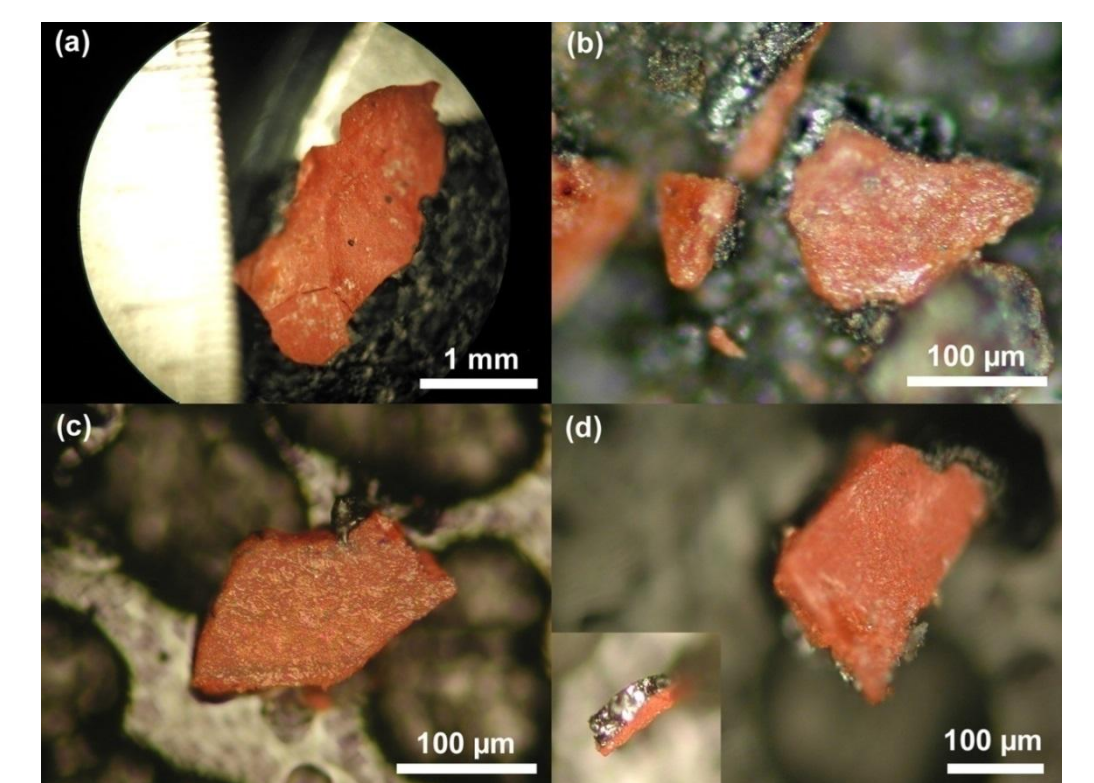


Figure 7: Fragments of Nano-Thermite Found in the WTC Powder

Failure to Consider Consequences to Public Health

By failing to examine the WTC powder and the abundant evidence for the use of explosives, NIST has severely down-played the toxic effects on, and greatly inhibited public response to, those who breathed the powder without protection. In a purely gravity-driven building collapse, such a lethal mixture of fine particulates would neither have been created nor dispersed so widely. Failure to study all the evidence has momentous and on-going health consequences for many thousands of human beings. This omission violates the codes of ethics for engineers and health care providers that hold public safety paramount.

Misrepresentations

No other high-rise steel-framed buildings have ever collapsed though some have been completely engulfed in fire for many hours. NIST and other researchers agree that the jet fuel was fully consumed in the first few minutes after impact and "did not significantly affect the overall heat released." Once the fuel was consumed, there were only fire-resistant office furnishings to maintain the oxygen starved fires.

The verticality of the collapses of the Towers through the path of greatest resistance indicates simultaneous destruction of all of the core columns and perimeter columns. This is not consistent with the locations of the heat. The outer perimeter columns were subject to cooling and there was no significant flammable material around the core columns because they were surrounded by the void of elevator shafts. NIST's omissions and misrepresentations for the Twin Towers violate professional ethical standards as well as sound scientific principles.

Failure to Provide the Most Essential Theory

NIST's reports lack the most essential theory needed to substantiate a gravity-driven collapse. Such a theory would describe how the collapse began and progressed at a rate of acceleration equal to about two-thirds of gravitational free-fall, why the concrete floors and steel pans and most everything else were fragmented or pulverized to a fine powder, why exterior aluminum cladding and massive steel columns were severed and propelled hundreds of meters from the buildings, and why the powder contained an excessive amount of iron micro-spheres as well as unreacted nano-thermite. The theory would also have to explain the energy source needed to sustain fires in the debris pile that could not be extinguished for many weeks, as if it were the result of ongoing thermite reactions. By claiming a gravity-collapse mechanism as its conclusion, NIST has perpetrated a scientific fraud of major proportions.

Ethics: The Demonstrated Need For Open and Transparent Peer Review

NIST's reports are highly suspect from an ethical standpoint, with alarming consequences for society. To maintain the integrity of the engineering profession and indeed respect for science itself, engineers, scientists and other professionals everywhere must speak out and demand a new, open and transparent, peer-reviewed study into the skyscraper destructions at the World Trade Center using all the available evidence, not just selected data.